

# Cotoni Coast Dairies

Alternative Management Plans

February 2020

The Bureau of Land Management Central Coast Field Office is seeking public input on an environmental assessment and draft amendment to the Resource Management Plan for the California Coastal National Monument that will provide management direction for Cotoni-Coast Dairies public lands in Santa Cruz County. The 30-day public review period ends on March 19.

[https://eplanning.blm.gov/epl-front-office/eplanning/planAndProjectSite.do?methodName=renderDefaultPlanOrProjectSite&projectId=120855&dctmId=0b0003e88138563f&fbclid=IwAR0t1uA\\_EldtIzqgEK\\_Bc2EaxbxorJ0tS82svBuCdFtMQTj68jzO7aReo7g](https://eplanning.blm.gov/epl-front-office/eplanning/planAndProjectSite.do?methodName=renderDefaultPlanOrProjectSite&projectId=120855&dctmId=0b0003e88138563f&fbclid=IwAR0t1uA_EldtIzqgEK_Bc2EaxbxorJ0tS82svBuCdFtMQTj68jzO7aReo7g)

# Alternative A

- Do nothing!

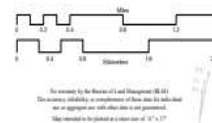
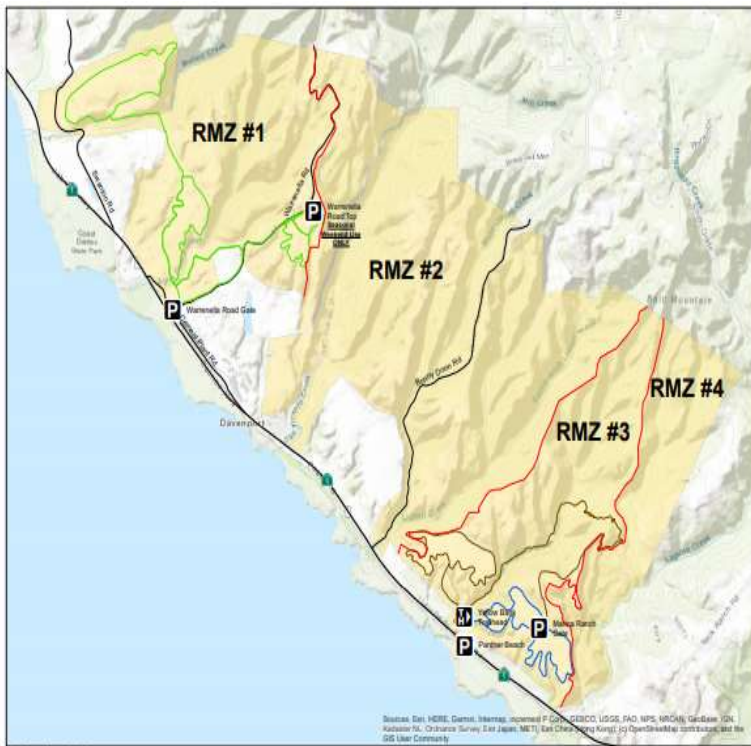


## Legend

-  Day Use Area
-  Trailhead
-  Liddell Creek Trail
-  Molino Creek Trail
-  Bureau of Land Management

# Alternative B

- Recreation Management Zones



## Uses in each Zone (partial list)

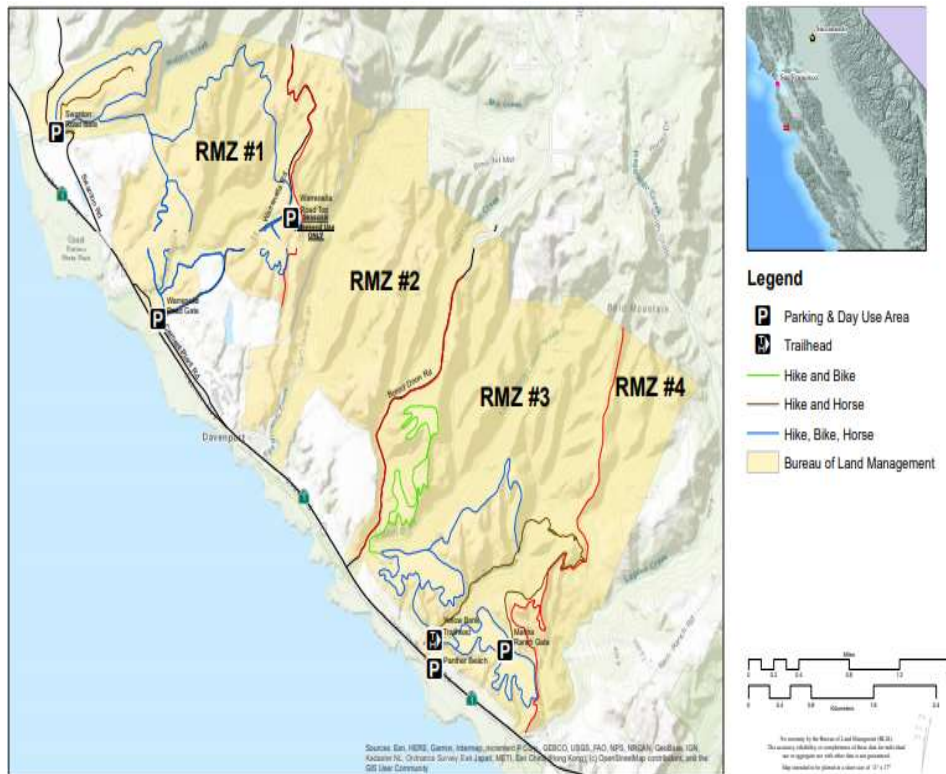
In RMZ 1, establish a loop trail system, allowing for connectivity to the adjacent San Vicente Redwoods property. Design trails for hiking and mountain biking opportunities. Promote volunteer efforts to support visitor use education, trail maintenance, and foster a healthy public land stewardship etiquette.

In RMZ 3, establish a loop trail system, allowing for connectivity to the North Coast Rail Trail. Design trails for hiking and equestrian opportunities. Promote volunteer efforts to support visitor use education, trail maintenance, and foster a healthy public land stewardship etiquette.

Allow hunting in RMZ 2 (2641 acres) under special conditions through a permitted special hunt established by the California Department of Fish and Wildlife (CDFW) in coordination with the BLM and interested parties. Prior to issuing permits for a special hunt, CDFW must work with the BLM and partners to establish regulations to define the seasons, types of game, take limits, and/or restrictions

# Alternative C

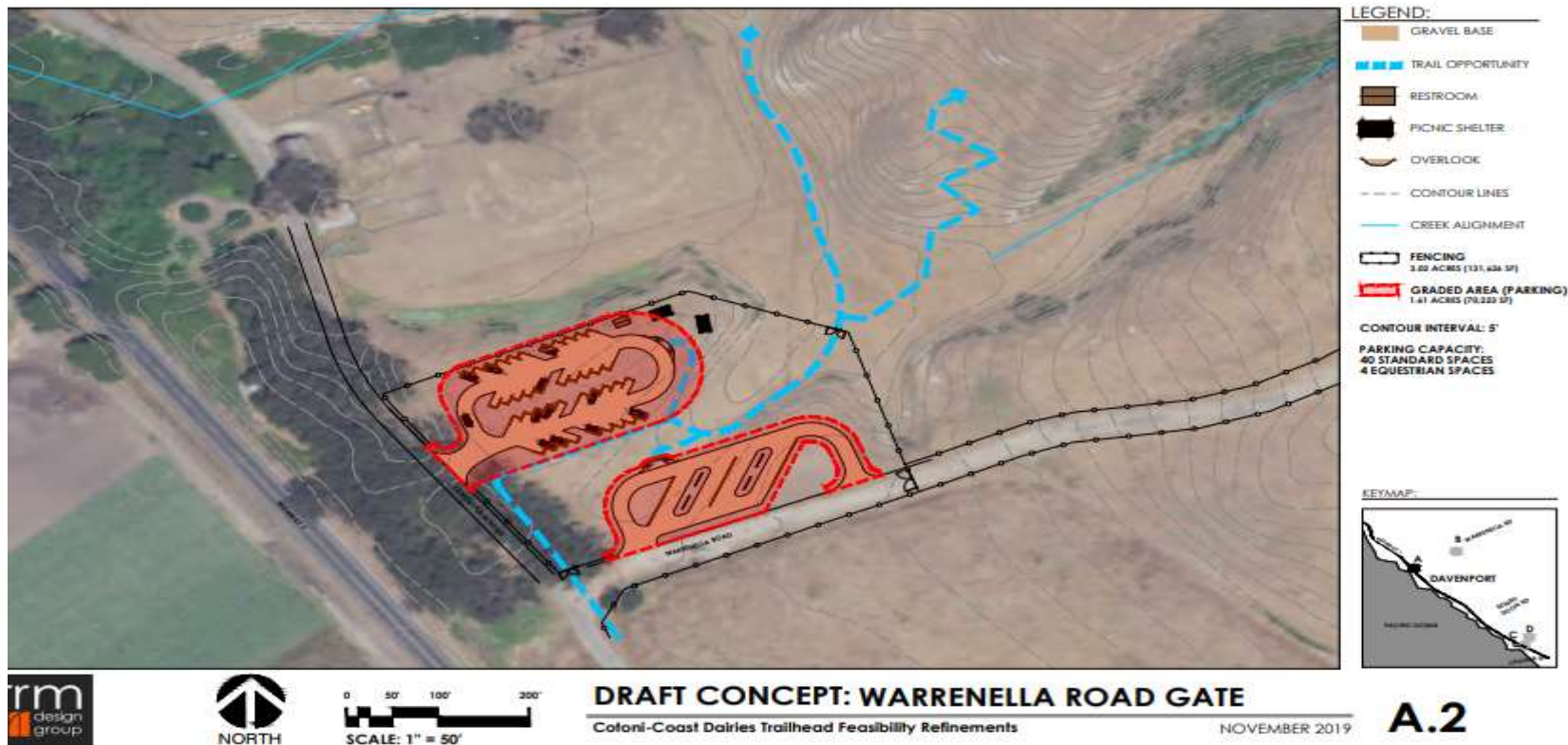
## • Recreational Management Zones



## • Uses in each zone (partial list)

- In RMZ 1, establish a loop trail system with connectivity to San Vicente Redwoods. Design trails for hiking, mountain biking, and **equestrian** opportunities. Promote volunteer efforts to support visitor use education, trail maintenance, and foster a healthy public land stewardship etiquette
- In RMZ 3, establish a loop trail system, allowing for connectivity to the North Coast Rail Trail. Design trails for hiking and **equestrian** opportunities. Promote volunteer efforts to support visitor use education, trail maintenance, and foster a healthy public land stewardship etiquette.
- Hunting still to be allowed in RMZ2, note that the acreage in RMZ2 in this option is 1,629 acres vs 2,641 acres in Alternative B

# Warnella Road Gate Parking – 4 equestrian spots



# Marina Ranch Gate – 4 equestrian spots



# Call to Action

Two open house meetings will be held during the review period from 5:30 to 7:30 p.m. on the following dates and locations:

- Wednesday, **March 4**, Bonny Doon Union Elementary School District, 1492 Pine Flat Rd., Santa Cruz, CA 95060
- Thursday, **March 5**, Louden Nelson Community Center, 301 Center St., Santa Cruz, CA 95060

*The 30-day public review period ends on March 19. Written comments may be submitted, please see BLM website for details.*